

ARTCC ARGENTINO AD 2.SAZG

NO VALIDO PARA NAVEGACION REAL. ADAPTADO PARA SU UTILIZACION EN UN AMBITO VIRTUAL
SAZG – GENERAL PICO

AD 2.17 ESPACIO AEREO ATC

Zona de Control:

- | | | |
|-------------------------------------|------------------------------|--------|
| 1. Designación: | Zona de Control General Pico | |
| 2. Límites verticales: | FL 035
GND | |
| 3. Clasificación del espacio aéreo: | C | |
| 4. Distintivo de llamada: | PICO TORRE | |
| 5. Altitud de transición: | 3000 FT. | |
| 6. Nivel de transición: | QNH de 977 a 994 | FL 050 |
| | QNH de 995 a 1013 | FL 045 |
| | QNH de 1014 a 1031 | FL 040 |
| | QNH de 1032 a 1050 | FL 035 |

Area de Control Terminal:

- | | |
|-------------------------------------|---------------------------------------|
| 1. Designación: | Area de Control Terminal General Pico |
| 2. Límites verticales: | FL 075
2000 FT |
| 3. Clasificación del espacio aéreo: | C: FL 075 / 2000 FT |
| 4. Distintivo de llamada: | PICO TORRE |

AD 2.18 INSTALACIONES DE COMUNICACIONES ATS

SERVICIO	DISTINTIVO DE LLAMADA	FRECUENCIA	OBSERVACIONES
APP	Pico Torre	119.000	-

AD 2.19 CARTAS AERONAUTICAS

- | | |
|-----------------------|--|
| - Plano de aeródromo: | SAZG.APT |
| - Cartas IAC: | SAZG.IAC NO.1 RWY 34
SAZG.IAC NO.2 RWY 34 |

(DEJADO EN BLANCO INTENCIONALMENTE)

APT

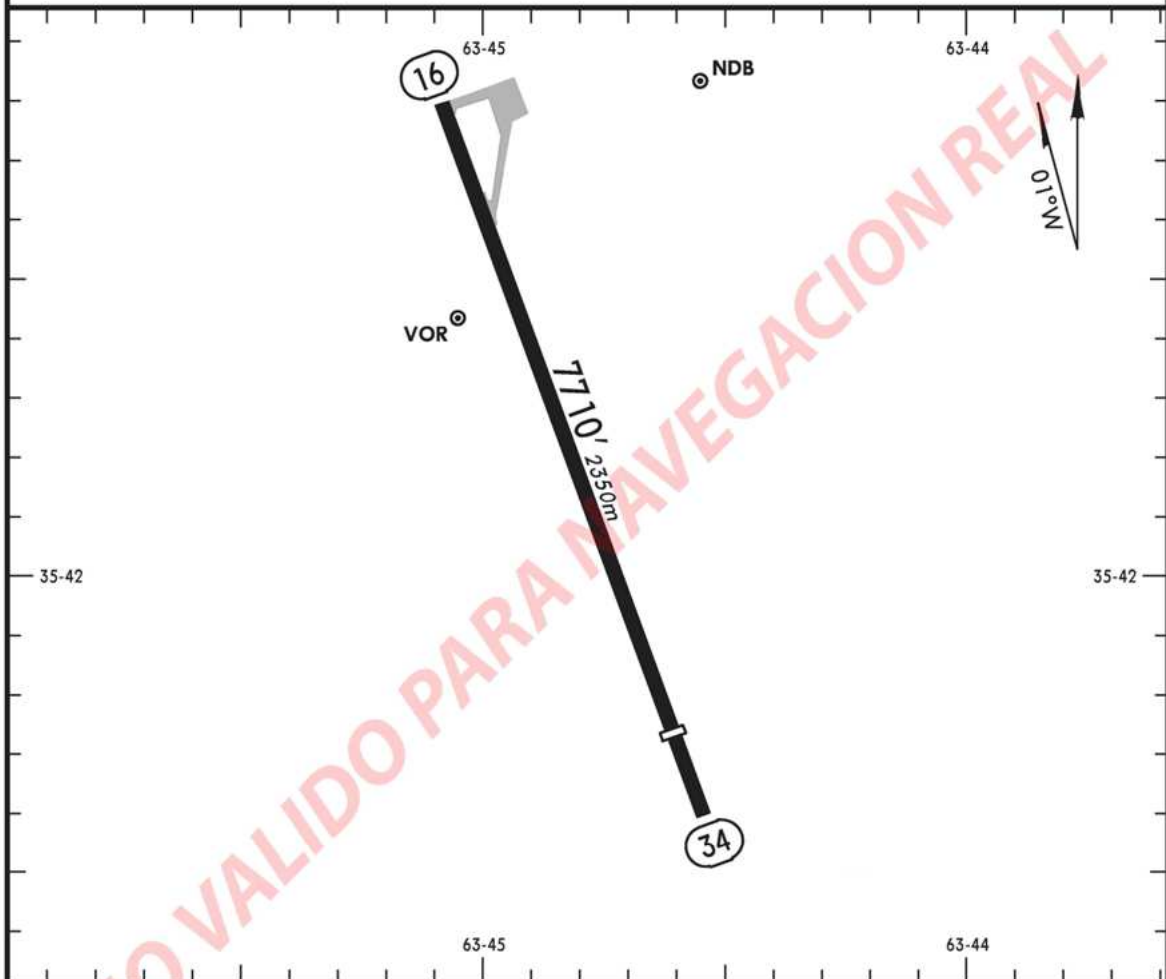
SAZG

Apt Elev 459'
S35 41.7 W063 45.5

GENERAL PICO, ARGENTINA

GENERAL PICO

*GENERAL PICO Tower 119.0



ADDITIONAL RUNWAY INFORMATION

RWY		RL	USABLE LENGTHS		TAKE-OFF	WIDTH
			Threshold	Landing Beyond Glide Slope		
16	34	RL	6808'	2075m		148'
						45m

SAZG
GENERAL PICO

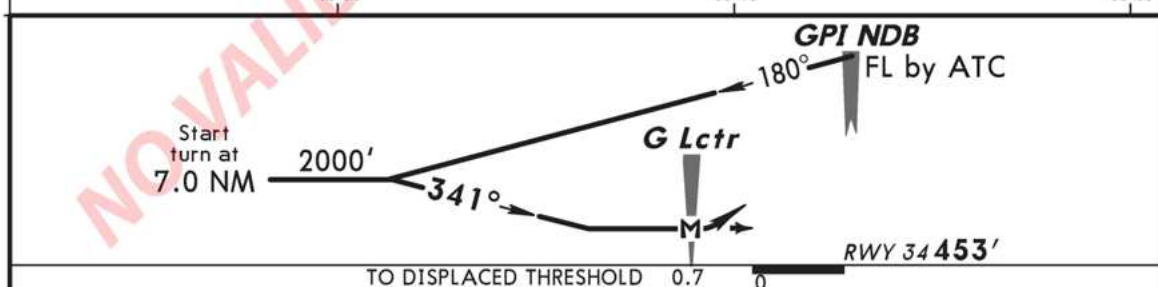
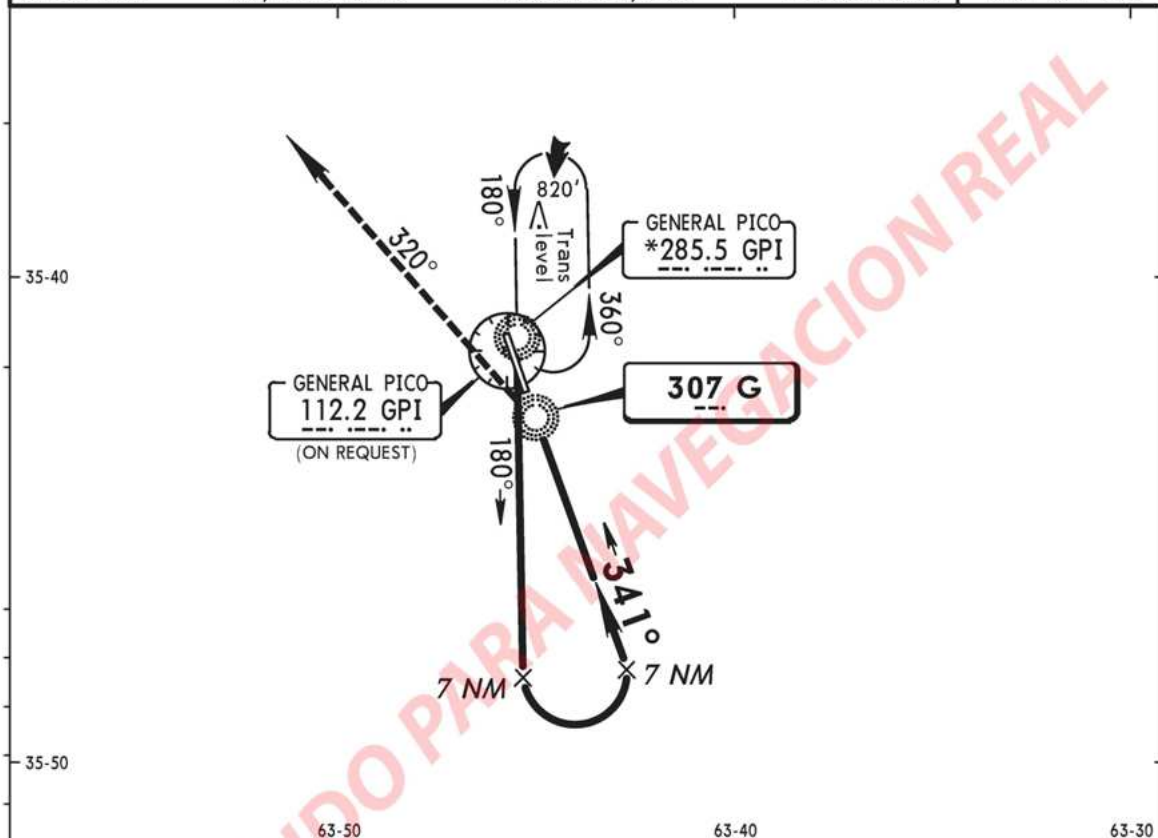
GENERAL PICO, ARGENTINA
No. 1
VOR LCTR Rwy 34

				*GENERAL PICO Tower	
				119.0	
Lctr G 307	Final Apch Crs 336°	No FAF	MDA(H) 850' (397')	Apt Elev 459' Rwy 34 453'	<div style="border: 1px solid black; border-radius: 50%; width: 100px; height: 100px; margin: 0 auto; display: flex; align-items: center; justify-content: center;">3000'</div>
MISSED APCH: Turn to a 320° bearing climbing to 3000' and follow instructions from CONTROL.					
Alt Set: hPa Rwy Elev: 16 hPa Trans level: By ATC Trans alt: 3000'					
<div style="position: relative; height: 200px;"> </div>					
<div style="position: relative; height: 100px;"> </div>					
				3000'	G 307 320°
STRAIGHT-IN LANDING RWY34				CIRCLE-TO-LAND	
MDA(H) 850' (397')					
1600m				Max Kts.	MDA(H)
				100	1000' (541') - 1900m
				135	1000' (541') - 2800m
				180	1150' (691') - 3700m
A				205	1150' (691') - 4600m
B					
C					
D					

SAZG
GENERAL PICO

GENERAL PICO, ARGENTINA
No. 2
NDB LCTR Rwy 34

				*GENERAL PICO Tower	
				119.0	
Lctr G 307	Final Apch Crs 341°	No FAF	MDA(H) (CONDITIONAL) 850' (397')	Apt Elev 459' Rwy 34 453'	<div>3000'</div>
MISSED APCH: Turn to a 320° bearing climbing to 3000' and follow instructions from CONTROL.					
Alt Set: hPa		Rwy Elev: 16 hPa	Trans level: By ATC	Trans alt: 3000'	



TO DISPLACED THRESHOLD 0.7 0				RWY 34 453'	
MAP at G Lctr				3000'	G 307 320°
STRAIGHT-IN LANDING RWY34				CIRCLE-TO-LAND	
MDA(H) 850' (397')					
With G Lctr		Without G Lctr		Max Kts	MDA(H)
1600m		NA		100	1000' (541') - 1900m
				135	1000' (541') - 2800m
				180	1150' (691') - 3700m
				205	1150' (691') - 4600m